

# OSAS VERSION 8.0

A foundation for the future





# INTRODUCING OSAS VERSION 8

In today's global business world, your customers, suppliers, employees, and shareholders expect you to be available, informed, and connected at any time, day or night. Without a doubt, it is a mobile and accessible world in which we live. The demand for quick answers, fast information access, seamless report sharing, and stable business platforms is greater than ever before, and that demand is increasing.

To help you answer the call, Open Systems, Inc. announces OPEN SYSTEMS® Accounting Software (OSAS®) version 8, the latest iteration of our powerful, comprehensive business and accounting software suite.

As the people working within your business need access to information away from the desktop with greater frequency, your ERP software must provide ways to make this data available when and where it is needed. OSAS version 8 adds new features to the robust, scalable, and reliable OSAS software you've come to depend upon and places it all atop a technology platform built to retrieve and deliver the information you need in ways that give you a competitive edge in your industry.

## It all starts under the hood

Open Systems offers OSAS version 8 exclusively on the Java®-based BBJ® platform from BASIS International. Java, and the BBJ language and database built upon it, provides OSAS with a multiplatform, dependable, and fully scalable foundation. Upon this foundation, OSAS is a truly platform-independent solution that you can deploy in Windows®, Mac®, and Linux® environments, or combinations thereof. And the Java platform ensures that we can continue to deliver our solutions on the latest, most powerful operating system versions available, from Microsoft's Windows 8 to Apple's OS X® Mountain Lion and beyond. And because Java is a trusted industry standard, you'll have access to a wide variety of tools and utilities, legions of Java experts to turn to for help, and the capability to integrate your OSAS ERP system easily with other third-party products that you use.

Built upon the solid Java foundation, OSAS version 8 delivers an enhanced architecture designed to provide better connectivity and access to data, from enhanced reporting and data export to web service connectivity for integration to solutions designed to run in web browsers and mobile devices, such as smart phones and tablets.

From the ground up, this release of OSAS delivers a technology platform built to suit the way business is—and will be—done in the 21st century.



# OSAS<sup>®</sup>

## VERSION 8.0



# OPEN SYSTEMS(R) Accounting Software

Date: 07/31/2014 Time: 4:25 pm

Refresh

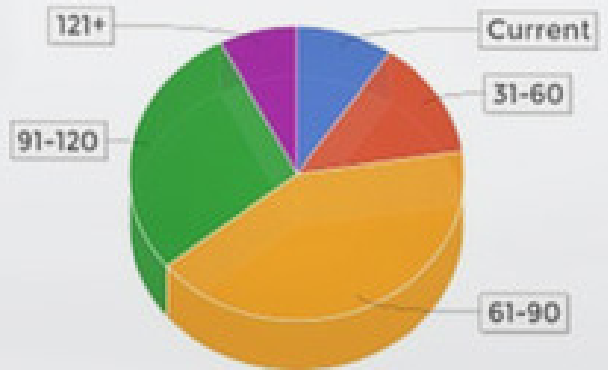
## Top Customers YTD

5 Customers

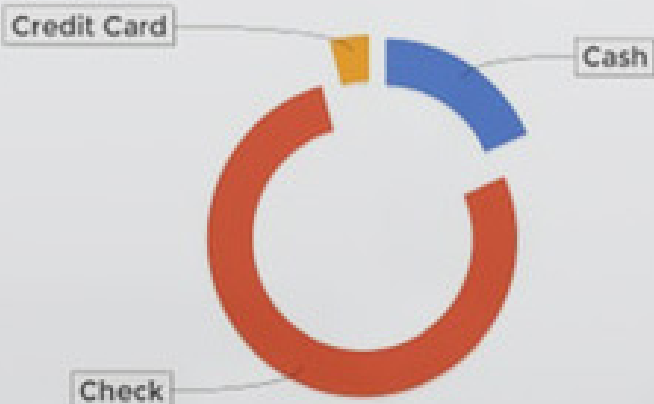
Bar Chart



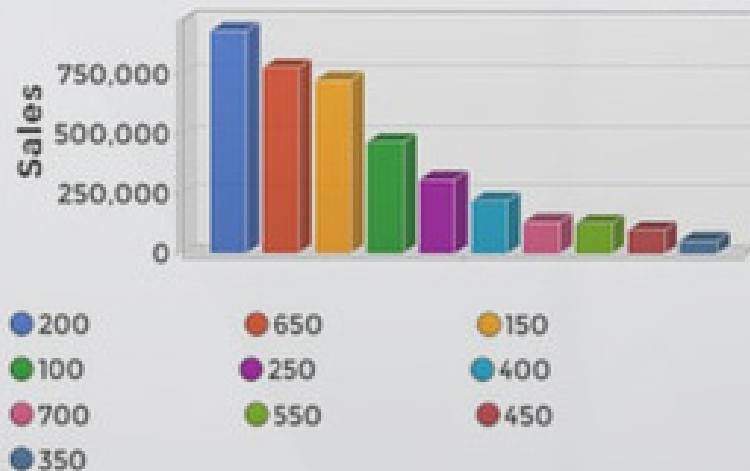
## Customer Aging by Days



## Customer Payments YTD by Type



## Top Items YTD





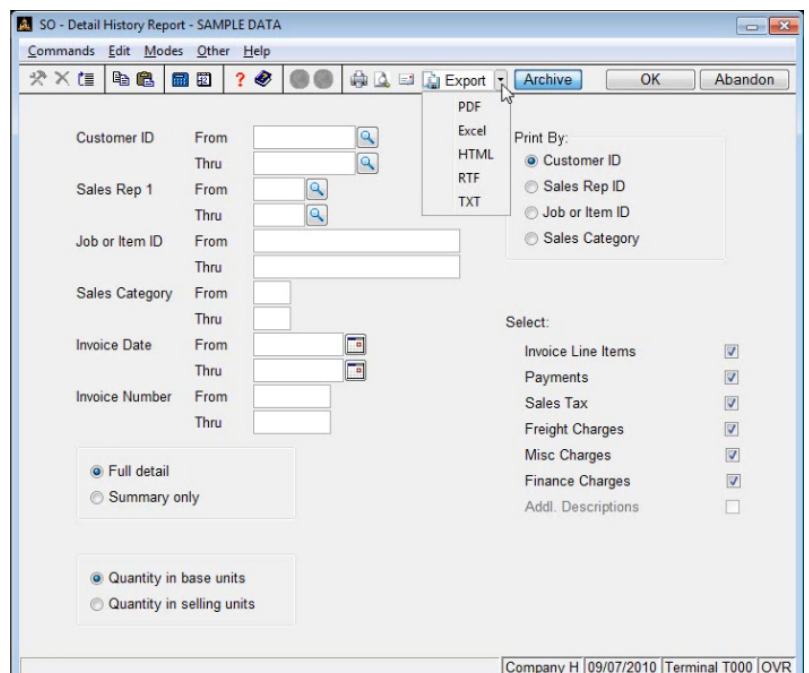


## Select output options directly from selection screens

OSAS version 8 has all-new printing functionality to make it easier than ever to share information. Report selection screens contain new printing icons and a drop-down export menu within the toolbar, giving you complete printing controls without leaving the selection screens themselves. Use these icons to print the report, to preview the report on the screen, or to email the report directly from the report selection screen. If you use the built-in report archiving capabilities in OSAS, you can easily designate whether to archive this generated report from the toolbar as well.

## New export format options

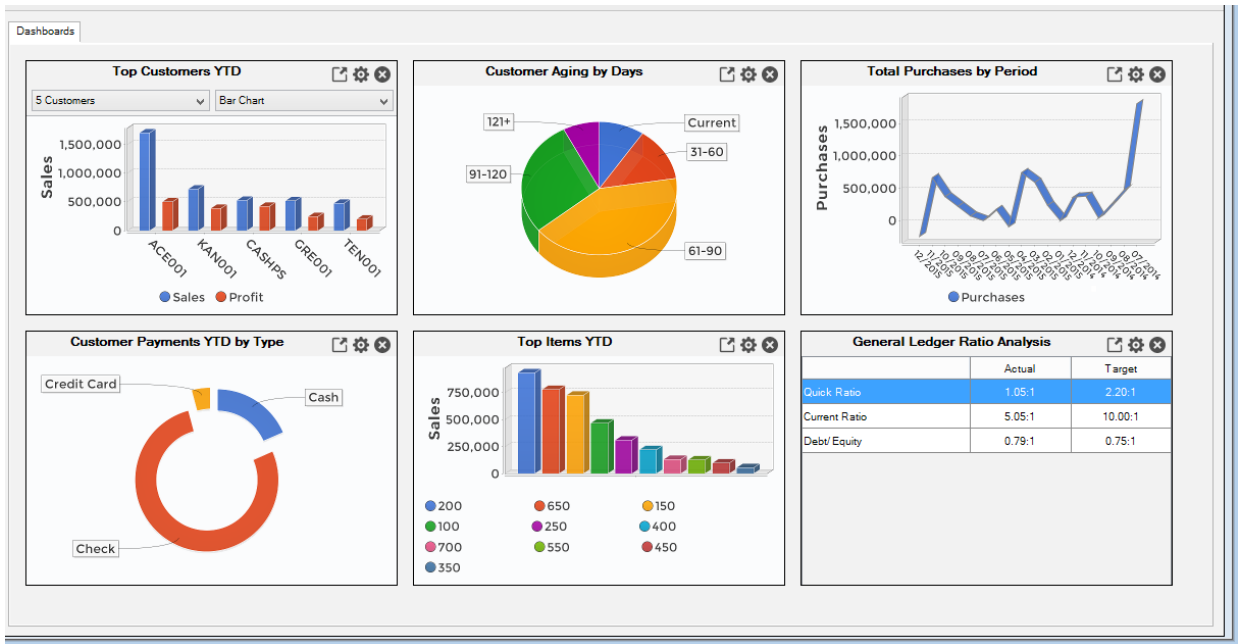
The report selection screens in OSAS version 8 also feature a new Export button next to the new printing icons. This button gives you the option of exporting reports in PDF, Excel, HTML, Rich Text, or text format directly from the selection screen. Simply choose one of the export formats to save the file in the location and with the name you specify. You can then use any application that supports the format you've chosen to open and work with the report as you like. Even better, if you prefer a different format than the ones offered on the selection screen, the report viewer offers you the option to save any report you preview in a variety of additional formats.



# DASHBOARD AND OSAS UPDATER

## Dashboard

The Dashboard application is an extension of the EIS functionality in Resource Manager. It's designed for executives and managers to keep their fingers on the pulse of the business, whether they are in the office or on the road. You can choose graphical representation or grid-style text and numeric display for any of several business metrics and represent them in any configuration that provides the most value to you. You can adjust the arrangement and the representation of any metric to suit your needs.



*Dashboard gives your decision makers quick access to critical, up-to-date information.*

## The OSAS Updater

OSAS version 8 includes a new automatic update mechanism. This utility within your OSAS system gives you access to the latest versions we have available for OSAS, without waiting for a new release. This mechanism allows us to distribute new features to you with reduced impact on properly implemented customizations. This concept of continuous enhancement has been very popular with users of our TRAVERSE® application line, and the new OSAS update mechanism allows us to extend the same benefits to you in version 8.

Since the release of OSAS version 8, Open Systems has added dozens of enhancements through the automated update system, including charting in selected inquiry functions, numerous new and convenient report printing shortcuts, improved drill-down capabilities, and new file export options.





## Building on the past, looking to the future

There are many things to love about OSAS version 8. You'll realize instant value in the form of the new reporting capabilities and the new applications as well as the lasting benefits of a powerful, dependable technology platform designed with your future needs in mind.

In version 8, OSAS delivers unprecedented access to your business information, connectivity for a mobile workforce, and a technology foundation built to ensure that we can continue to provide the kinds of solutions you need to make your business successful for years to come.





## Corporate Headquarters

4301 Dean Lakes Blvd., Shakopee, MN 55379

800-328-2276 • 952-496-2495(fax)

[www.osas.com](http://www.osas.com) • [info@osas.com](mailto:info@osas.com)

## Regional Offices

California • Florida • Georgia • Illinois • Indiana • Iowa  
Kentucky • Kansas • New Jersey • New York • North Carolina  
Ohio • Oklahoma • Oregon • Puerto Rico • South Carolina • Tennessee  
Texas • Virginia • Washington • Wisconsin

## International Offices

Australia • Argentina • Canada • Costa Rica  
Honduras • India • Mexico • Panama