



OSAS WEB B2B

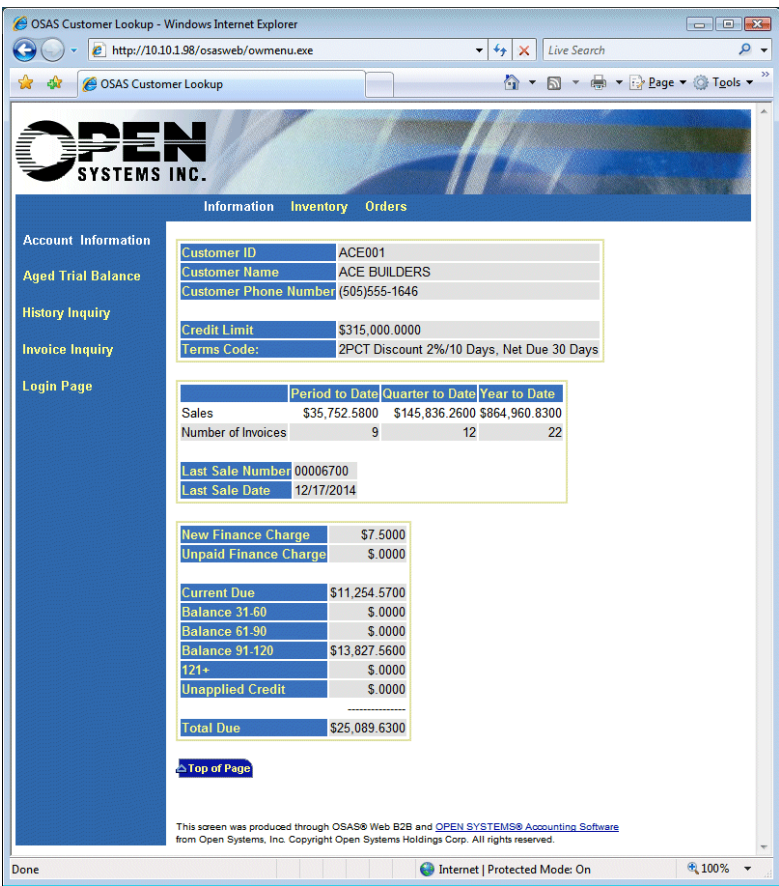
Easy to use, easy to modify: OSAS Web B2B gives you an Internet interface to your OPEN SYSTEMS® Accounting Software (OSAS®) data. Your customers can access their sales, receivables, and inventory information through the Internet, saving you time. You control the information presented, including which companies can be accessed, which items will be available over the Internet, etc. Sales Order Entry is part of OSAS Web B2B as well as inquiry screens from Inventory, Accounts Receivable, and Sales Order.

OSAS Web B2B allows you to set up passwords for each of your customers that determine the functions to which each customer has access. You can also decide which of your companies can be accessed through the Internet. All you need to do is enter a default location for quantities and pricing and a default batch ID.

Allow customers to place orders online through a convenient, browser-based interface.

Provide easy access to customer aging, history, and invoices, as well as inventory items.

Easily control the order and product information to which your customers have access.



The Customer Inquiry Screen lets your customers view their own information via any browser.

OSAS Web B2B Offers Choices and Flexibility With These Key Features:

- Determine the information to which your customers have access. You can turn off access for displaying credit information on the Customer General Information screen. You can also choose not to display outstanding balances.
- Automatically generate a list of orders for each Customer ID entered. If a customer has access to view order detail information, the order number provides a hypertext link to the order detail.
- Enable your customers to look up inventory information such as quantities and price/quantity breakdowns. After viewing the price/quantity breakdown for the item selected from the previous page, a customer can get back to the Item Information page simply by clicking the BACK button on the browser or by clicking the hypertext link to return to the OSAS Web B2B home page.
- Provide your customers access to order information, including all the line items that were submitted, the total tax calculated, and the total price. They can then change quantities and/or remove a line from the order by zeroing out the quantity. After entering shipping information, the customer can view the order number and enter another order, go back to the main menu, or return to the OSAS Web B2B home page.
- Creating your OSAS Web B2B home page is easy. The information entered when you set up your Internet companies is used to create an HTML page called OSASWEB. HTM. OSAS Web B2B will create this file and place it into the document directory of your web server.
- Give customers a breakdown of the product lines for the items that are accessible by the Internet, enter a quantity to order, and then either recalculate the extended price of the line or submit the line into the order.
- Print an invoice from History should one get lost or misplaced.
- Let your customers view their Detail Aged Trial Balance to see what they owe.
- Set up subgroups (groups within groups) in order to drill down for more detail in item searches.
- Allow your customer to enter their part number and bring up the correct inventory item when searching inventory or entering orders.
- Start a new order or add items to an order you're working on with links to Order Entry from History Inquiry, Item Inquiry, and Order Inquiry.
- Easily change a nontaxable order to a taxable order if not purchasing for resale.
- Set up location pricing by customer to allow for variations in pricing structure.