

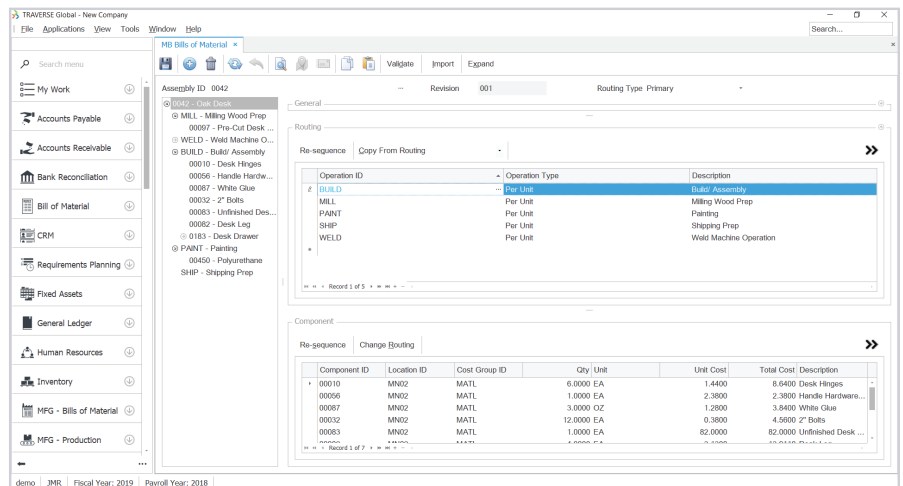
# Bill of Materials – Manufacturing

Successful manufacturing software implementation begins with the bills of material. A bill of material (BOM) defines the product structure in terms of materials and provides an optional connection to plant resources such as machinery, tooling, and labor defined by a bill of routing. The Bills of Material application provides a solid base for production activity to be defined, tracked, and reviewed. It also enables more advanced software, such as Requirements Planning, to be properly utilized.

The software functionality provided gives you the tools you'll need to define both the simplest and the most complex bills of material. Bills of Material provides advanced features such as detailed routing, multiple routing definition, mixed unit of measure, cross-group costing, scrap tracking, and total visual documentation.

Revision numbers, effective dates, and drawing numbers help to further define the BOM. You can set up simple, material-only bills quickly and with minimal work.

Standard cost maintenance, global component replacement, BOM change history, and a variety of inquiry functions give you automated update abilities and quick access to vital information.



- Gain insight into current and future availability with available-to-promise quantities and component availability.
- Attach media objects for videos or pictures of assemblies.
- Include yield adjustments when generating assembly requirements.

# Bill of Materials – Manufacturing

## Additional Features:

- Use stock or non-stock components.
- Perform global replacement of components.
- Create user-defined cost groupings.
- Apply optional routing definitions.
- Create user-defined fields for each assembly.
- Set up new bills easily with copy-from functionality.
- Track engineering change orders (ECO).
- Use unique configurations of labor and machine time for each bill (if interfaced to Routing & Resources application).
- Take advantage of extensive comments and descriptive notes areas.
- Import ASCII files.
- Handle scrap percentages.
- Process overlap enabled (if interfaced to MR application).
- Perform advanced online inquiries.
- Use multiple units of measure.
- Use comprehensive standard cost management with General Ledger interface.
- Choose standard, LIFO, FIFO, or average costing.
- Handle lot-tracked and serialized inventory.
- Update, rollup, and adjust standard costs.

## Bill of Materials – Reports & Master Lists:

Costed Bill of Material

Component Where Used

Available Components

Indented Bills of Material

Summarized Bills of Material

Bill of Material Worksheets

Bills of Material List

Media Groups List

Engineering Change Orders List

Cost Variance Report

Standard Cost Adjustment