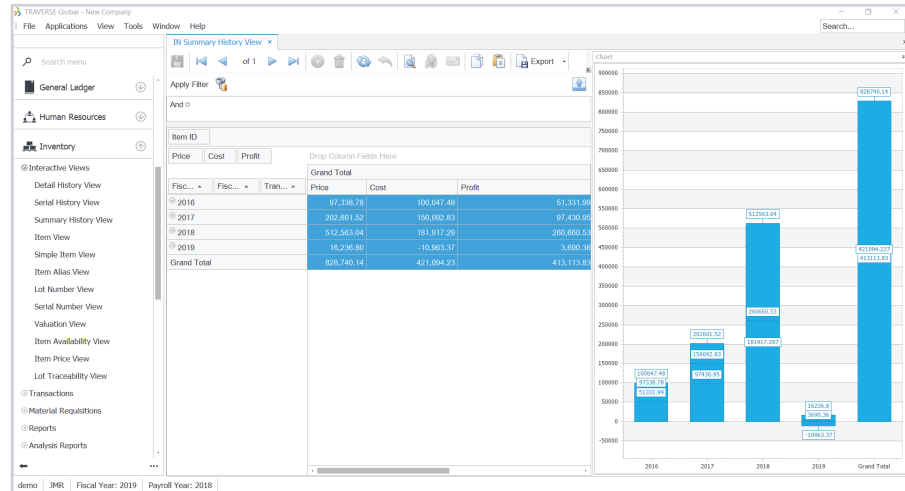


Inventory

When it comes to inventory management, you need to know what you have in stock, how much it's worth, and where it's located in order to meet the needs and demands of your customers. Traverse Inventory can help you keep ample inventory quantities on hand at all times.



Closely monitor inventory movements by tracking detailed inventory history. Then, use the Inventory Movement Report to identify your best products and to understand their purchase/sales cycles. With Traverse Inventory, you'll be able to make informed buying and selling decisions, improve customer service, and save money.

Set up as many locations as needed for each inventory item; all detail is maintained for each, including quantities, valuation, costs, and prices.

Create and maintain lot and serial numbers for those item types; lot number details include an expiration date, and serial numbers include detail purchase and sales information.

- **Create batches for physical inventory processing based on ABC class, product line, or other criteria. Use tag or worksheet entry to enter counts, import counts, or enter counts by exception only. Item quantities can be counted in the item base unit or the reporting unit of measure.**
- **Transfer item quantities to different locations as needed; transfer costs can be entered and added to the cost of the transferred product.**
- **Increase or decrease item quantities as needed to correct inventory situations; quantities are updated immediately and adjustments are saved to history.**
- **Associate item numbers with vendors, including the vendor's comparable part number. View all vendors associated with an item or all items associated with a vendor at a glance.**

Additional Features:

- Post goods received immediately as you enter them.
- Quickly access detailed descriptions for each item.
- Find alternate items automatically when stock levels are low.
- Freeze quantities for physical counts while normal processing continues.
- Process physical counts using worksheets, tags, or import the counts.
- Use exception-only entry in physical count cycles.
- Select groups of items for cycle counts.
- Define custom fields for your inventory items.
- Create aliases for inventory items.
- Perform quick item lookups using item aliases, customer and vendor part numbers, lot numbers, and/or serial numbers.
- Define your own color settings for visual stock level warnings.
- Enter and process material requisitions for internal or job use.
- Trace lotted and/or serialized items from raw material to finished good, or from finished good to raw material.
- View inventory movement over a number of fiscal years.
- Use a batch import process to change item prices.

Inventory Reports:

Item Status

Safety Stock Alert

Price

Valuation

Transactions Journal

Serialized History

Sales Analysis

Physical Inventory Variance

Physical Inventory Worksheets and Tags

Overstock

Trend Analysis

Slow/Fast Movement

Inventory Movement

Cost Variance

Gross Profit Analysis

Transaction History

Transfers Journal

Material Requisitions Journal

Backorder Allocations

Physical Count Valuation