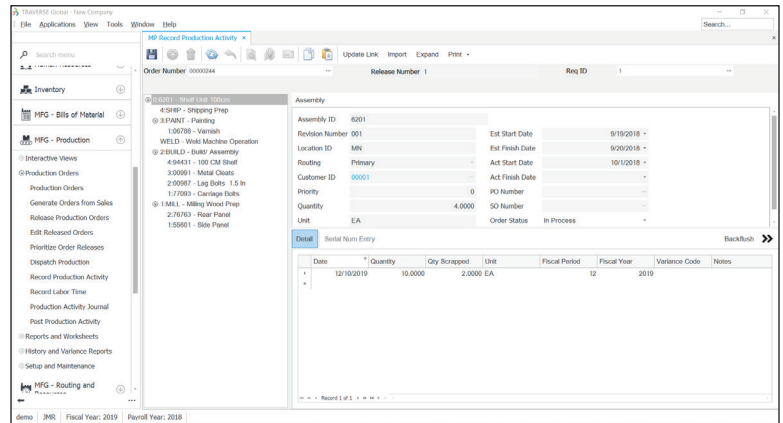


# Production Manufacturing

Production is where it all comes together. Your software must be able to tell you today's production status, what is going to happen next, and what happened yesterday. The Traverse Manufacturing Production application is up to the task. Online inquiry into existing production orders shows percentage complete based on time and materials, and gives you detailed information of the status of each production process.

Once you create them, you can edit production orders via the visual editor in a drill-down manner for the flexibility your manufacturing environment requires. You can import activity from an external source such as an automated time card or barcode data collection system, or you can enter it manually.

Use videos and pictures to assist in the process. A sophisticated dispatch process allows you to set the production sequence to keep things moving smoothly.



See when, where, and why variances took place in terms of time, usage quantities, and final production.

- **Seamless optional interface to Sales Order, General Ledger, and Payroll.**
- **Easily handle lotted and serialized inventory.**
- **Perform multiple releases per production order.**
- **View detailed operation status information in a single process requirements view.**
- **View detailed component material status information for production orders.**
- **View the production process and/or requirements for active production orders, as well as the distribution of labor time across multiple operators and capacity constraints, in a graphical manufacturing production scheduling tool.**
- **Define the cost to use (standard, average, or last) when updating inventory for partial completion of a finished assembly, creation of by-products, and moving stock for subassemblies.**

# Production Manufacturing

## Additional Features:

- Perform visual drilldown and production order editing.
- Use priority-based dispatching.
- Release orders online and in batches.
- Update inventory quantities online.
- Track problems by variance code.
- Print barcodes on worksheets.
- Set up multiple costing methods.
- Conduct online status inquiries of ongoing production.
- Use multimedia references for operations and materials.
- Employ multiple units of measure.
- Generate automated production orders from sales orders.
- Perform variance analysis for time, material usage, and production.
- Backflush at multiple levels.
- Retrieve scrap history.

## Production Reports

Sales Order Analysis  
Production Schedule  
Requirements Availability  
Production Picking List  
Order Traveler  
Subcontracted Services  
Dispatch List  
Order Status  
Work in Process Valuation  
Employee Time Log  
Work Center Load Profile  
Resource Availability  
Subcontracted Status  
Cost Variance Analysis  
Time Variance Analysis  
Production Variance Analysis  
Transaction History  
Production History  
Variance Code History