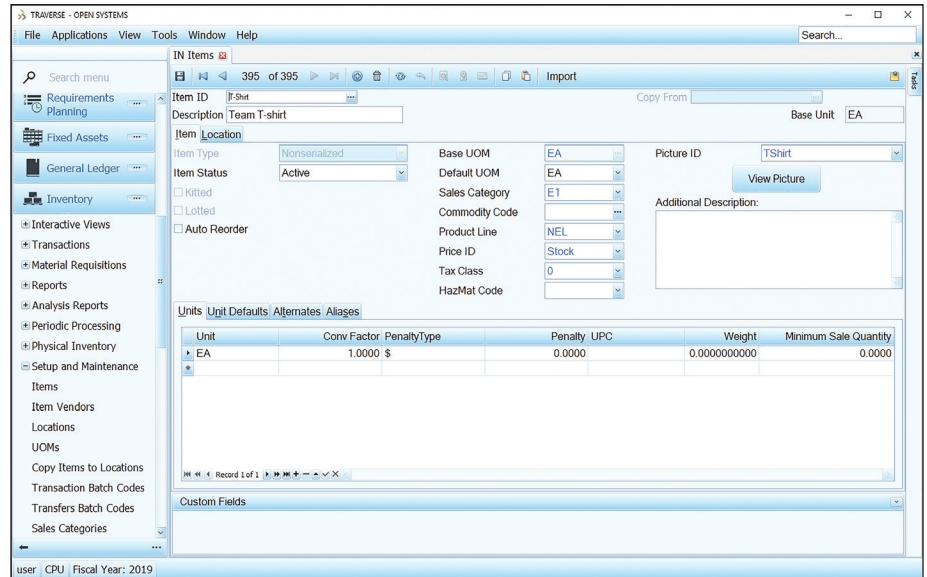


Not-for-Profit

Traverse Not-for-Profit (NFP) provides a robust set of NFP features in an intuitive, easy to use product. It gives you total integration to the Traverse General Ledger, Accounts Payable, and Payroll applications, and has the fund accounting features frequently requested by not-for-profit organizations.

Traverse NFP gives you the ability to improve financial management practices, increase flexibility in financial reporting, and streamline your tracking process for expenses. And because Traverse solutions are scalable, they can address the needs of virtually any size NFP organization.

The Allocation feature saves you data entry time by automatically splitting the Amount to Allocate among the segments dictated by the allocation method. The result will be a multiple record entry for several different accounts in the GL transactions screen. This feature is also included in Accounts Payable and Payroll.



- **Seamlessly export any report to Microsoft Office products such as Word™, Excel™, and Outlook with just a click; easily email your budget or financial statements to the board.**
- **Create unlimited funds, programs, grants, activities, departments, and divisions all in one place.**
- **Tag an account as active or inactive so that your chart of accounts does not show inactive accounts, grants, or activities.**
- **Easily track restricted, temporarily restricted, and unrestricted funds and provide reports on their activity, with automatic creation of due to/from entries as part of the process.**
- **Save valuable time with cross-fiscal-year reporting for financial reports and grants, conveniently located in the general ledger.**
- **Full integration to Traverse Inventory.**

Additional Features:

- Generate statements formatted to satisfy FASB 117 reporting requirements.
- Create financial reports that span multiple fiscal years.
- Perform seamless data imports.
- Use intercompany accounts to simplify transfers between multiple companies.
- Allocate transactions by account segments or account ID.
- Fund accounting option available.

NFP Reports:

Statement of Activities

Revenue and Expense by Grant/Program

Statement of Functional Expenses

Statement of Financial Position

Compare Revenue & Expenses to Budget

Importing Capabilities from:

ADP Payroll

Sage Fundraising 50

Raiser's Edge

Other POS or general software packages

Donor Perfect

The screenshot shows the 'GL Transaction Allocations' window in the Traverse software. The window has a menu bar (File, Applications, View, Tools, Window, Help) and a search bar. On the left is a 'General Ledger' sidebar with various options like 'Interactive Views', 'Transactions', 'Management Reports', etc. The main area displays an 'Allocation ID' and a 'Description' field. Below this is a table titled 'Allocate to Segment' with columns for 'DV', 'DEP', 'Main', and 'Percentage'. The table contains three rows of data. At the bottom, there is a 'Remaining Percentage to Allocate' field showing 0.00.

DV	DEP	Main	Percentage
00	002		28.00
01	005		20.00
02	001		52.00